

By: Cabinet Member for Education and Health Reform, Mr Roger Gough and Corporate Director for Education and Young People

To: Cabinet – 13 October 2014

Subject: Review and Implementation of KCC Policy on Supporting Pupils with Medical Conditions (including Mental Health Needs)

Classification: Unrestricted

Future Pathway of Paper: Cabinet Member decision

Electoral Division: All

Summary: This report updates members on the implementation of the Review of Pupil Referral Units for pupils with Health Needs and sets out the new draft KCC Policy on Supporting Pupils with Medical Conditions (including Mental Health Needs)

Recommendation: Cabinet is asked to approve the proposed KCC Policy on Supporting Pupils with Medical Conditions (including Mental Health Needs).

1. Background

- 1.1 A consultation on the future delivery options for the provision of the Education Health Needs Service was reported to the Education Cabinet Committee on 14th March 2014, following the review of the Health Needs Pupil Referral Units. This report sets out the details of the new structure and delivery models and the new KCC Policy on Supporting Pupils with Medical Conditions (including Mental Health Needs).
- 1.2 On 24 September 2014, the Education and Young People's Cabinet Committee received a report on the outcomes of the consultation and resolved to endorse the new Policy on Supporting Pupils with Medical Conditions (including Mental Health Needs).
- 1.2 The proposed new Health Needs Service will meet the needs of pupils with chronic illness, or long-term or other serious medical conditions (including those with mental health needs) who form potentially vulnerable groups of pupils at risk of underachieving.

2. The delivery model for Health Needs Provision in Kent

- 2.1 The new service is based on the clear expectation that all schools and existing Alternative Curriculum Pupil Referral Units will identify and support

pupils with chronic or long-term medical needs. The new service will provide additional support.

2.2 This new service will provide:

- an education service to schools for young people with physical medical needs
- and education outreach support for young people with mental health needs located in six resourced bases, with up to 120 places annually.
- together with Oakfields Education Unit and residential placements for the most complex needs.

An outline structure of this delivery model is given in Chart 1 in this report.

2.3 The new Health Needs Service will be managed by the Director of Early Help and Preventative Services.

3. Medical Needs Service

3.1 A dedicated service will support schools in meeting the educational needs of pupils with physical medical conditions, through a Head of School and County Outreach Team. This service is for learners with medical conditions, excluding mental health problems (which requires a differentiated support system). The team will coordinate support to the home school from specialist health support (including school nurses), Home Tuition, a Virtual Learning Environment, KIASS (Kent Integrated Adolescent Support Service) KIFSS (Kent Integrated Family Support Service) and other family support. For these pupils the home school remains accountable for educational provision and will have access to this integrated additional educational support to meet these pupils' needs.

3.2 Based on current referral cases, approximately 20% of the cohort that is referred to the current Health Needs Pupil Referral Units have medical needs of a long term physical nature. A number of these cases are short term medical conditions such as broken limbs, recovery from accident or glandular fever. The new service differentiates Kent's education support for these pupils, from those with mental health needs, where the complexity of need requires a different delivery model including resourced provision and fully planned reintegration processes for pupils.

4. Mental Health Needs Pupil Referral Unit, which includes: 1 Specialist Unit, 6 Resourced Bases and Outreach Support

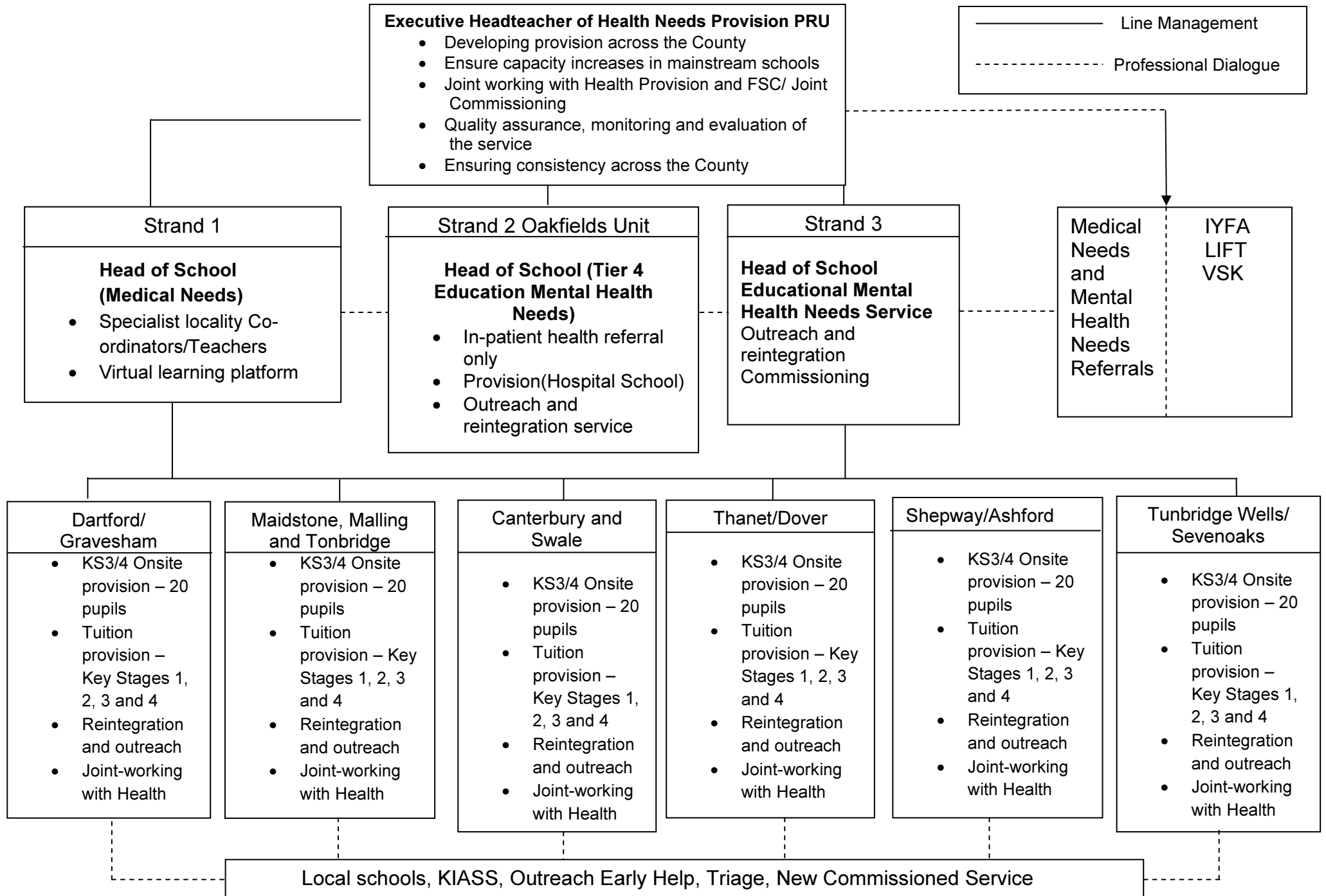
4.1 It is proposed that pupils with mental health needs will be supported by one county Pupil Referral Unit to provide co-ordinated and distinct services for those pupils with mental health needs. Useful guidance on the main types of mental health needs is set out in *Mental health and behaviour in schools: Departmental advice for school staff* (DfE, June 2014). The PRU will build on the existing framework of effective partnership working between the specialist Oakfields Education Unit, Specialist Children Services and clinical

professionals to deliver Tier 4 CAMHS educational provision. Links with the Health Services will be strengthened and joint integrated delivery models to support pupils with mental health conditions will be established in six new locality bases across the county. This will ensure parity of provision and access across Kent.

- 4.2 The PRU, including the six bases, will be managed by two Heads of School for Mental Health Educational Services. There will be one Head of School for the Oakfields Education Unit and one for Mental Health Outreach (who will line manage six locality managers). Referrals to the more specialist tier 4 Oakfields Education Unit are through health professionals only. The locality managers will be based in the six resourced centres providing Educational Outreach targeted and specialist support. The home school will request support, through a revised process, using Individual Health Care Plans. (See KCC Policy on Supporting Pupils with Medical Conditions (including Mental Health Needs pp.6).
- 4.3 Accountability for pupil progress and outcomes will rest with the pupil's home school. This service will maintain close liaison with the home school and will manage multi-agency support to ensure effective reintegration for the pupil when their health outcomes have improved.
- 4.4 The mental health needs provision for Kent will offer up to 120 places in any academic year. The length of stay will vary according to need and is intended to offer short-term support and possible placement. Learners with long-term mental health conditions should have their educational needs addressed through a SEND assessment and possible specialist placement.
- 4.5 A distinctive element of this proposal is the development of an effective reintegration programme for pupils with mental health needs together with education outreach support. This will be a prime responsibility for the locality managers working in the 6 outreach centres and managed by the Head of School.

Proposed Outline Structure: Health Needs Service

Chart 1



5. The Structure of the Service

- 5.1** There are currently three Health Needs PRUs. The service will be restructured into one PRU to ensure equity of provision across the county. A new post of Executive Headteacher of Health Needs Provision has been agreed. The person in this new role will be responsible for developing the new service across the county; increasing the capacity of schools to provide educational support for learners with health needs; developing robust joint partnerships; working with Early Help, Health, and with Social Care to coordinate support; quality assuring, monitoring and evaluating the impact of the service. Recruitment to this post will take place in the autumn 2014.
- 5.2** Following this appointment, consultation with existing staff employed in the three Health Needs PRUs will take place. The implementation date for the new structure will be 1st September 2015.

6. KCC Policy on Supporting Pupils with Medical Conditions (including Mental Health Needs) - Attached as Appendix 1

- 6.1** The Health Needs Project Board was established over a year ago, as part of the review, with representatives from the Health Service, KCC officers, Health Needs PRU Managers and Chairs of the Management Committees, and representatives from mainstream and Special schools.
- 6.2** This group has overseen the development of the new delivery models for health needs and the production of the new policy document "Supporting Pupils with Medical Conditions (including Mental Health Needs)". This new policy is attached as Appendix 1.
- 6.3** The policy is intended to offer clear guidance to schools on their roles and responsibilities in supporting learners with health needs. The policy also sets out the role of the Local Authority and Health Authorities.
- 6.4** Schools will be required to have Individual Health Care Plans (IHCPs) for all learners with health needs. Additional support from the Health Needs Education Service will be accessed through these Plans.
- 6.5** Meetings will take place with all schools during the autumn term 2014, to explain how the new service will operate from 1st September 2015.

7. Resources

- 7.1** Financial:
A new formula funded budget for the single PRU will be developed in consultation with schools to provide a more equitable distribution of the current funding allocation.

7.2 Accommodation:

- 1) The accommodation arrangements have been agreed for five of the locality bases for Health Needs Provision:
 - Thanet/Dover – Hartsdown Academy (pending final decisions)
 - Shepway/Ashford – Pent Valley Technology College
 - Canterbury/Swale – Parkside Primary School (pending final decisions)
 - Tunbridge Wells/Sevenoaks – Hawkwell Centre
 - Maidstone, Tonbridge and Malling – Leybourne (current West Kent PRU provision)
 - The site for Dartford and Gravesham is yet to be agreed.
- 2) Oakfields Education Unit provision will continue to operate in Staplehurst alongside the Woodlands Residential Unit.

7.3 A new staffing structure for the County Health Needs PRU has been costed and is expected to be in the region of 1.9 million pounds. This is within existing budget allocations.

8. Recommendation

8.1 Cabinet is asked to approve the proposed KCC Policy on Supporting Pupils with Medical Conditions (including Mental Health Needs).

9. Background Documents

Department for Education, (June 2014). *Mental health and behaviour in schools: Departmental advice for school staff*. London: HMSO [online] Available at: <https://www.gov.uk/government/uploads/system/uploads/attachment_data/file/317288/Mental_health_and_behaviour_in_schools.pdf>

Department for Education, (April 2014). *Supporting pupils at school with medical conditions: Statutory guidance for governing bodies of maintained schools and proprietors of academies in England*. London: HMSO [online] Available at: <https://www.gov.uk/government/uploads/system/uploads/attachment_data/file/306952/Statutory_guidance_on_supporting_pupils_at_school_with_medical_conditions.pdf>

Department for Education, (September 2014). *Supporting pupils at school with medical conditions: Statutory guidance for governing bodies of maintained schools and proprietors of academies in England*. London: HMSO [online] Available at: <https://www.gov.uk/government/uploads/system/uploads/attachment_data/file/3494>

[35/Statutory guidance on supporting pupils at school with medical conditions.pdf](#) >

Department for Education, (January 2013). *Ensuring a good education for children who cannot attend school because of health needs: Statutory guidance for local authorities*. London: HMSO [online] Available at:

<[https://www.gov.uk/government/uploads/system/uploads/attachment_data/file/269469/health_needs_guidance - revised may 2013 final.pdf](https://www.gov.uk/government/uploads/system/uploads/attachment_data/file/269469/health_needs_guidance_-_revised_may_2013_final.pdf)>

Ofsted, (2014). *Pupils with medical needs: Briefing for section 5 inspection*. Ofsted: Manchester, UK.

10. Contact Details

Report Author

Sue Dunn
Head of Skills and Employability Service
01622 694923
Sue.Dunn@kent.gov.uk

Relevant Directors:

Sue Rogers
Director of Education, Quality and Standards
01622 694983
Sue.Rogers@kent.gov.uk

Florence Kroll
Director of Early Help and Preventative Services
Florence.Kroll@kent.gov.uk
01622 696030